

## Cleaning Your Coffeemaker:

### Filter basket, carafe and lid.

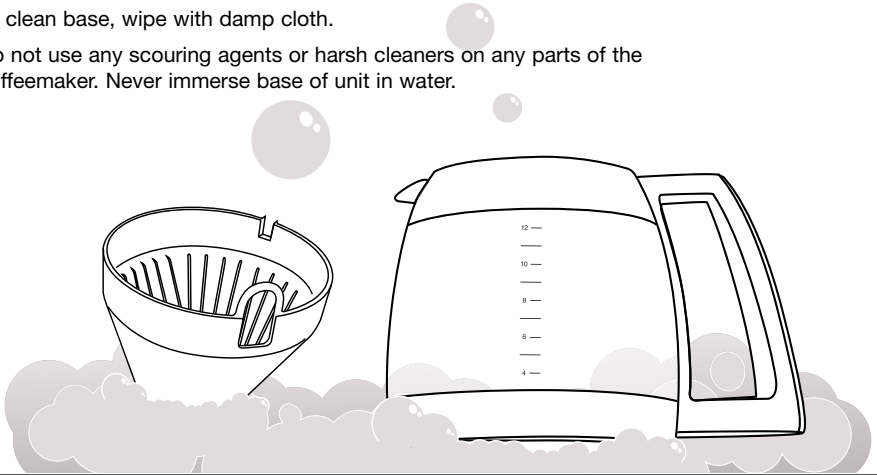
Turn unit off and remove plug from outlet.

Wash filter basket, carafe and lid in warm, soapy water and rinse thoroughly, or clean in upper rack of dishwasher. Dry after use.

Wipe area under the filter basket with a damp cloth. **NOTE: DO NOT PUT ANY WATER IN THE UNIT ONCE FILTER BASKET IS REMOVED.**

To clean base, wipe with damp cloth.

Do not use any scouring agents or harsh cleaners on any parts of the coffeemaker. Never immerse base of unit in water.



## Decalcification:

A flashing Clean light indicates unit needs to be decalcified. Fill the water reservoir to capacity with 1/3 cup of white vinegar and 2/3 cup of water. Press the Clean button; when light comes on, turn Coffeemaker on. Five beeps sound when Clean cycle is complete; unit will shut off. Turn unit back on and if Clean light flashes, repeat process; if not, run a brew cycle **with water only**. Unit is then ready to use

## Cleaning Your Hot Water System:

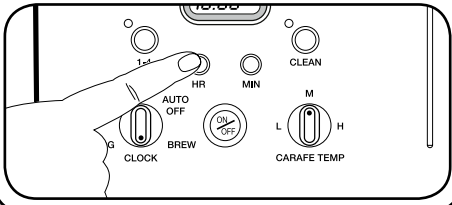
We recommend you decalcify your hot water system twice a year.

Dispense any water in your reservoir until the Add Water light flashes. Add 32 ounces of white vinegar. Dispense 16 ounces of vinegar and discard; this will fill the inner tank. Let unit sit for 20 minutes, then turn to Off and allow hot vinegar to cool. Drain internal reservoir over sink by removing water release tab on bottom of unit. When vinegar has completely drained, replace tab. Refill reservoir with water and drain water as directed above. Unit is now ready to use.

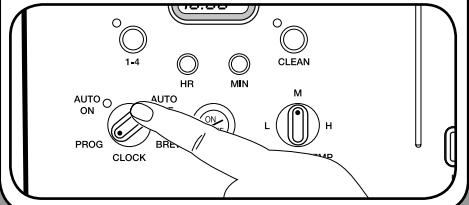
# QUICK REFERENCE GUIDE

## PROGRAMMING

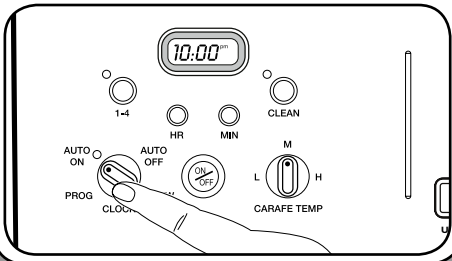
- 1. To Set the Time:** Turn the Function knob to CLOCK. Press and hold Hour or Minute button until the clock begins flashing. Hold down the Hour or Minute button to scroll through the numbers. When desired time approaches, release the button and press repeatedly to advance one digit at a time. To finish, wait for the numbers to stop flashing.



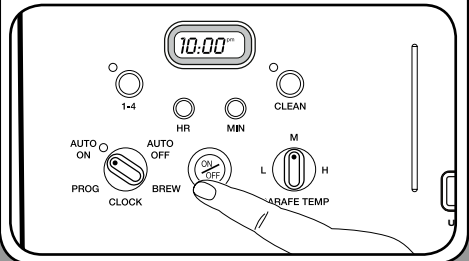
- 2. To Program the Auto On:** Turn the Function knob to PROG; the Auto-On LED will flash. Set the time you want coffee to begin brewing (follow Set the Time instructions). Once complete, turn the Function knob to AUTO ON and press the On/Off button. The blue indicator light will come on to remind you that the programming function is in use.



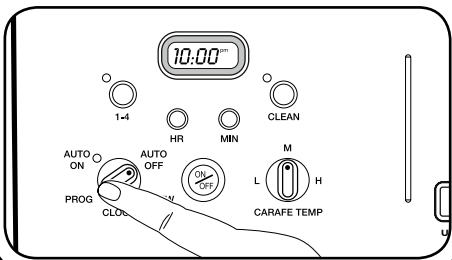
- 3.** At the programmed time, the blue On/Off indicator light will come on, indicating that the brew cycle is starting.



- 4.** To start the brew cycle at the same time the next day, make sure the Function knob is on AUTO ON and press the On/Off button. The blue Auto-On light will illuminate.



- 5. To Program the Auto Off:** Turn the Function knob to AUTO OFF. Follow Set the Time instructions to program Coffeemaker to shut off 0 to 4 hours after brew cycle is finished.



# Cuisinart®

12-Cup Programmable Coffeemaker  
& Hot Water System

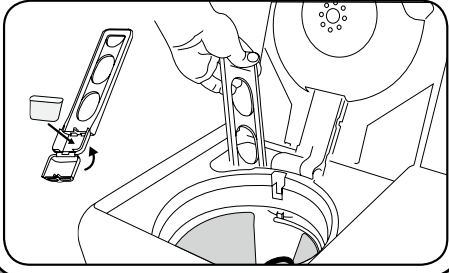


Please see reverse side for setup and use instructions.

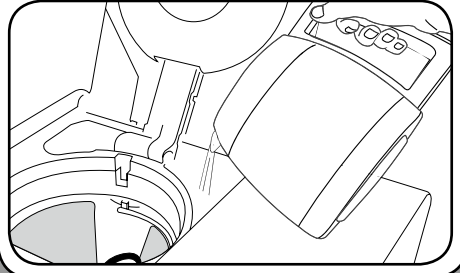
# QUICK REFERENCE GUIDE

## SETUP AND USE: Coffeemaker

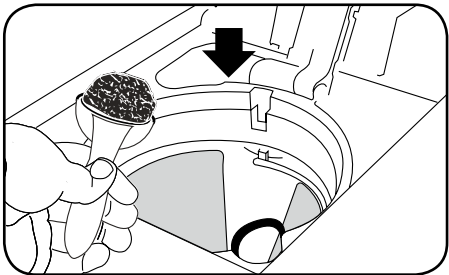
- 1.** Fully immerse the charcoal water filter in cold tap water and soak for 15 minutes (see complete instructions on page 7 of your Instruction Booklet). Insert filter into the water filter holder. Open the water reservoir and insert filter into the unit.



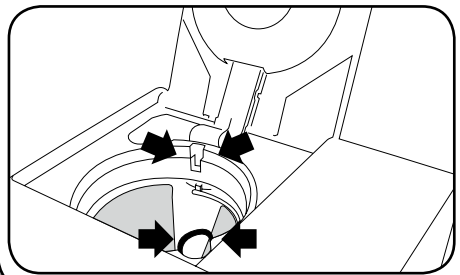
- 2.** Pour desired amount of water into water reservoir (a water level indicator is located on the side of the unit).



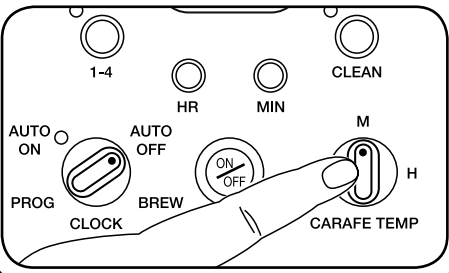
- 3.** Insert a permanent gold tone filter or paper filter into the filter basket holder. Using the scoop provided, add 1 scoop of ground coffee per cup (maximum 15 scoops). Adjust the amount to taste and close the lid.



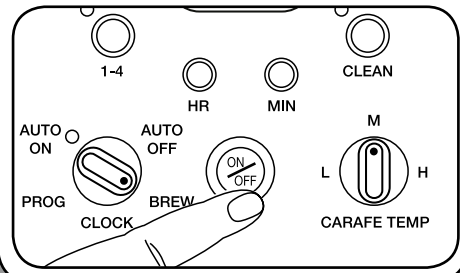
- 4.** Check to make sure the filter basket is securely in place and lid is completely closed.



- 5.** Turn the Carafe Temperature dial to Low, Medium or High – heater plate keeps coffee at selected temperature.



- 6.** To start brewing, turn Function knob to the BREW position and press the On/Off button. The blue indicator light will illuminate and brewing will begin. A beep will alert you when coffee has finished brewing.

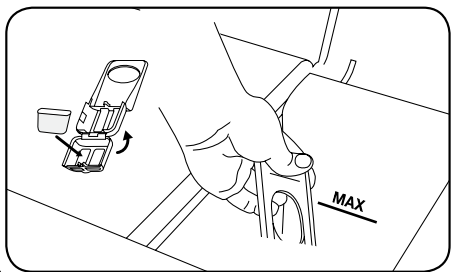


Please see reverse side for Setup and Use: Hot Water System

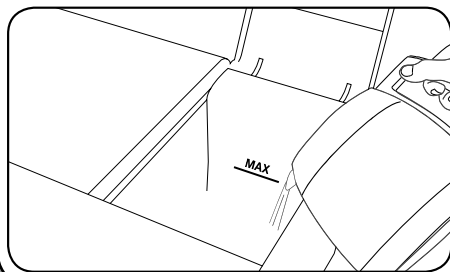
# QUICK REFERENCE GUIDE

## SETUP AND USE: Hot Water System

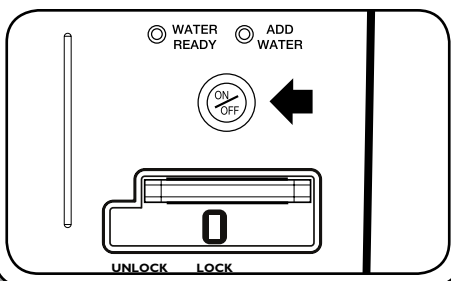
- 1.** Fully immerse the charcoal water filter in cold tap water and soak for 15 minutes (see complete instructions on page 7 of your Instruction Booklet). Insert filter into the water filter holder. Open the water reservoir and insert filter into the unit.



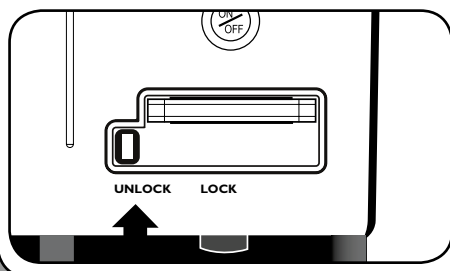
- 2.** Fill the water reservoir with cold water to the maximum fill line.



- 3.** Press the On/Off button on the Hot Water side of the unit. The green indicator light next to Water Ready will flash during heat-up, and will stop flashing when water has reached temperature and is ready.



- 4.** Move safety switch left to unlock. Place a cup on drip tray and press the lever down. The unit will dispense 10 oz. of hot water at a time. **NOTE:** Hot Water System works independently of Coffeemaker; it can be filled and heated before, during, or after coffee is brewing.



## IMPORTANT!

**Do not throw away. Read before operating your new coffeemaker. Keep for further reference.**

These helpful hints are intended to be a supplement to the Instruction Booklet. In order to ensure proper operation and optimum performance, please read the entire Instruction Booklet.

## Helpful Hint!

**We recommend flushing both the Coffeemaker and Hot Water System before first use.**

1. Coffeemaker: Fill the water reservoir with cold water and follow directions for using Coffeemaker. **DO NOT ADD COFFEE!**
2. Hot Water System: Follow directions for using Hot Water System, then dispense all hot water to flush the system.

You are now ready to enjoy your new Cuisinart Coffeemaker/Hot Water System!